

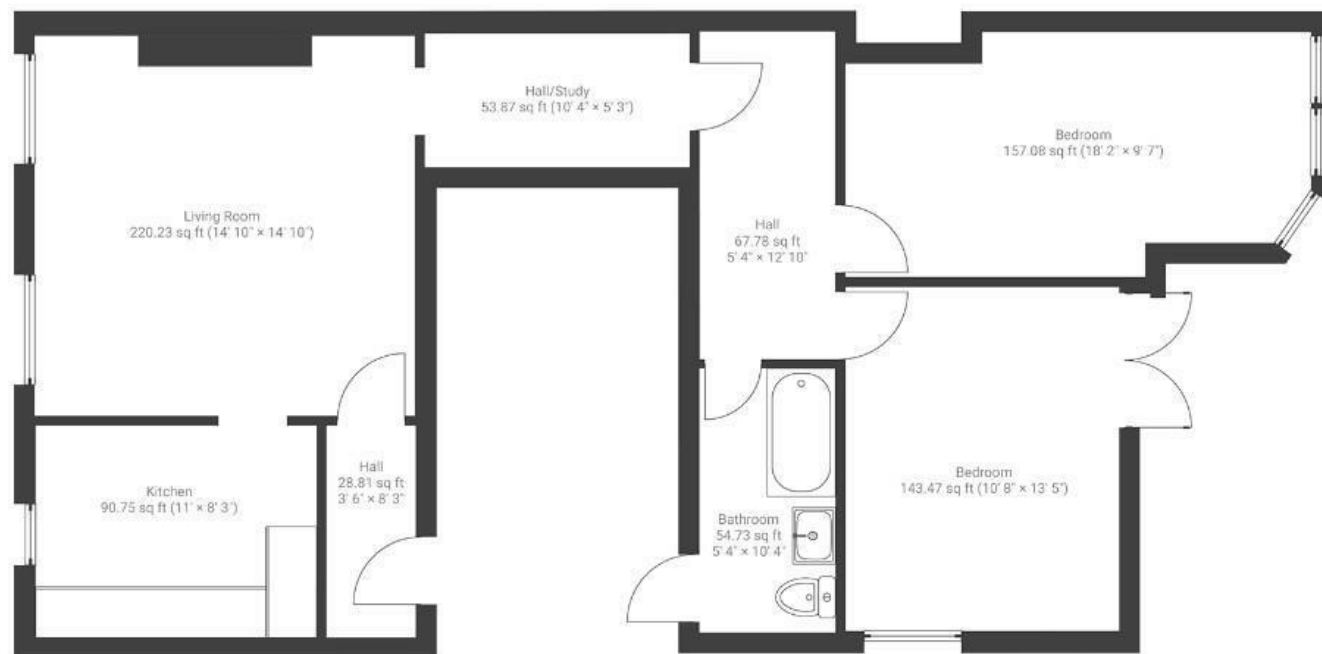
Brunswick Square

ST. PAULS

APPROXIMATE FLOOR AREA
88 SQM / 947 SQFT



GROUND FLOOR



Boardwalk

7 Brunswick

ST PAUL'S, BRISTOL



£370,000



2 Bedrooms



BS2 8PE



1 Bathrooms

"What we love most about living here is the mix of space, location, and Georgian character – the tall ceilings, huge windows, and thoughtful design give it a really welcoming feel. The position of the flat means you can enjoy each room at different times of the day as the natural light moves through the space. We've spent countless evenings eating in the courtyard garden, surrounded by lush, mature plants – it's a proper hidden gem. It's crazy how central it is, yet so peaceful – you'd never guess you're right in the heart of Bristol. Being neighbours with Farro Bakery is dangerous (in the best way)."

